





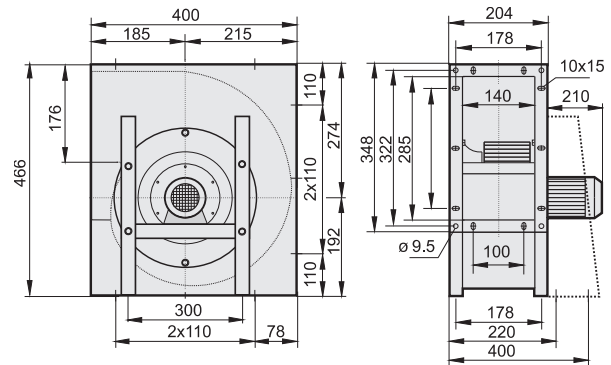


Typ / Type: ERNE 225-4 (LG/RD)		Art.-No.: B15-22500 / B15-22501	
U	230V (50Hz)	Δp _{fa} min	295 Pa
P ₂	0.55 kW	ΔI	-- %
I _N	3.9 A	I _A / I _N	3.9
n	1395 min ⁻¹		IP55
C _{400V}	-- μF		01.431
t _R	40 °C		17 kg

Typ / Type: ERND 225-4 (LG/RD)		Art.-No.: B05-22540 / B05-22541	
U	400V (50Hz)	Δp _{fa} min	300 Pa
P ₂	0.55 kW	ΔI	-- %
I _N	1.5 A	I _A / I _N	3.9
n	1390 min ⁻¹		IP55
C _{400V}	-- μF		01.430
t _R	40 °C		16 kg

LW _{Arel} A-bewertet bei V=0,5*V _{max} LW _{Arel} A-weighted at V=0,5*V _{max}	f [Hz]						
	125	250	500	1K	2K	4K	8K
Ausblasseite 4-polig / outlet side 4-pole	-23	-10	-8	-4	-7	-9	-16
Ansaugseite 4-polig / inlet side 4-pole	-19	-11	-11	-5	-5	-8	-14
Ausblasseite 6-polig / outlet side 6-pole	-23	-10	-6	-6	-6	-8	-15
Ansaugseite 6-polig / inlet side 6-pole	-20	-18	-8	-5	-5	-8	-16



Y-Schaltung /
star-connection